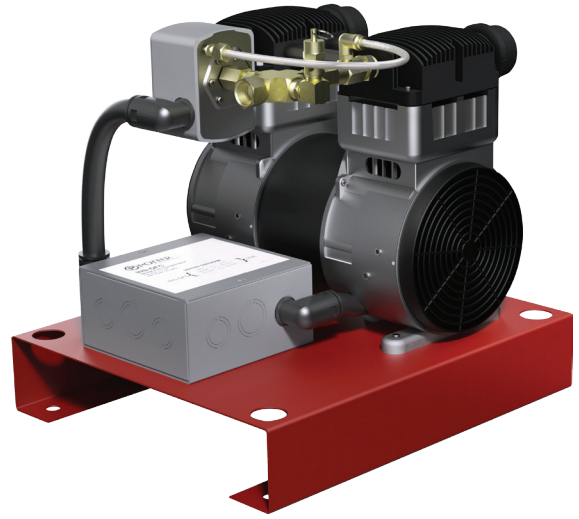


Features

- 2HP quiet oil-less air compressor
- Meets NFPA 13 required 30 minutes fill for 500 gallon system at 40 PSI
- Pressure switch provided
- Skid mounted



Description

The INS-QFC is an air compressor designed for quick filling a sprinkler system to the desired sprinkler system supervisory pressure. The INS-QFC adds up to 500 gallons of bypass fill capacity at 40 PSI to any Potter IntelliGen™ Nitrogen Generator. The INS-QFC is designed to be used in addition to a Potter IntelliGen™ Nitrogen Generator only on the initial fill. Once the system reaches the supervisory pressure, the nitrogen generator will provide 98% or greater nitrogen for the maintenance make-up gas.

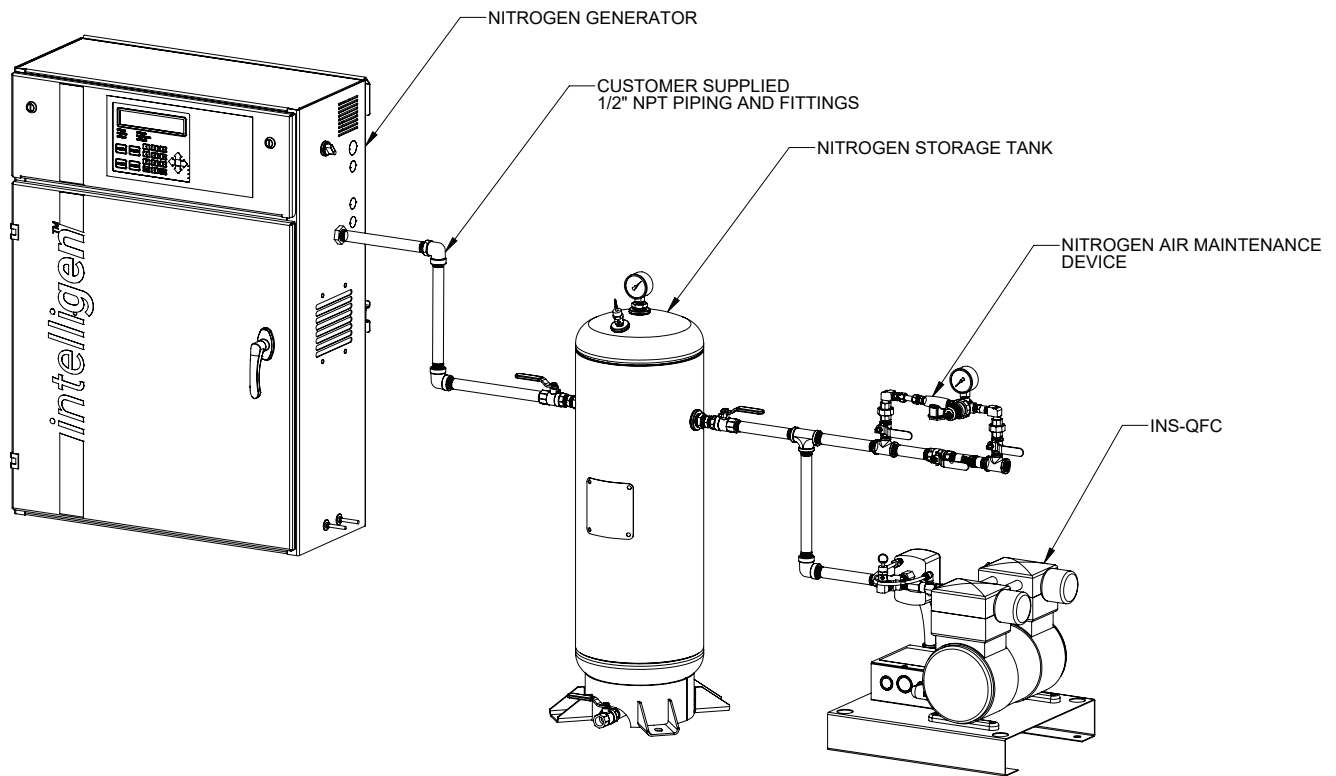
Technical Specifications

Dimensions	See Fig 3
Weight	40 lbs
Power Supply	110V (14.5 A) single phase 60HZ
Fire Sprinkler System Connection	½" Female NPT
Operating Pressure	Up to 55 PSI
Temperature Range	50°F (10°C) to 110°F (43°C)

Installation

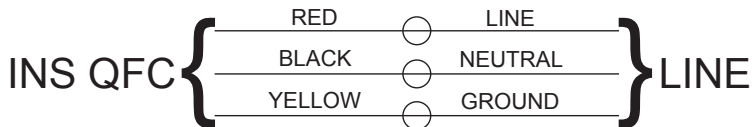
1. Near the nitrogen storage tank, mount the INS-QFC using the (4) Ø 9/16” holes on the skid.
 2. Plumb ½” piping from the air compressor outlet to a customer supplied ½” tee on the outlet of the nitrogen storage tank. See Fig 1.
- Note:* The air compressor must be plumbed upstream of the air maintenance device.
3. Run 110V single phase power from a dedicated 20 Amp breaker. See Fig 2.
 4. When there is no pressure in the sprinkler system, the air compressor will turn on, filling the system to the desired supervisory pressure as set by the air maintenance device. Once the pressure in the tank reaches approximately 50 PSI, the air compressor will turn off.
 5. The Potter IntelliGen™ Nitrogen Generator will continue running in Bypass Mode, filling the nitrogen storage tank to the desired 80 PSI.
 6. The Potter IntelliGen™ Nitrogen Generator will automatically switch to nitrogen mode and provide 98%+ nitrogen to the fire sprinkler system.

Fig 1



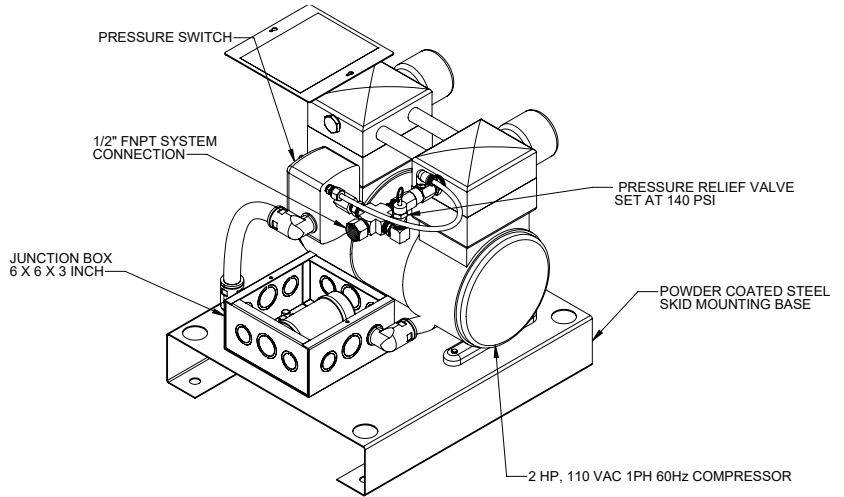
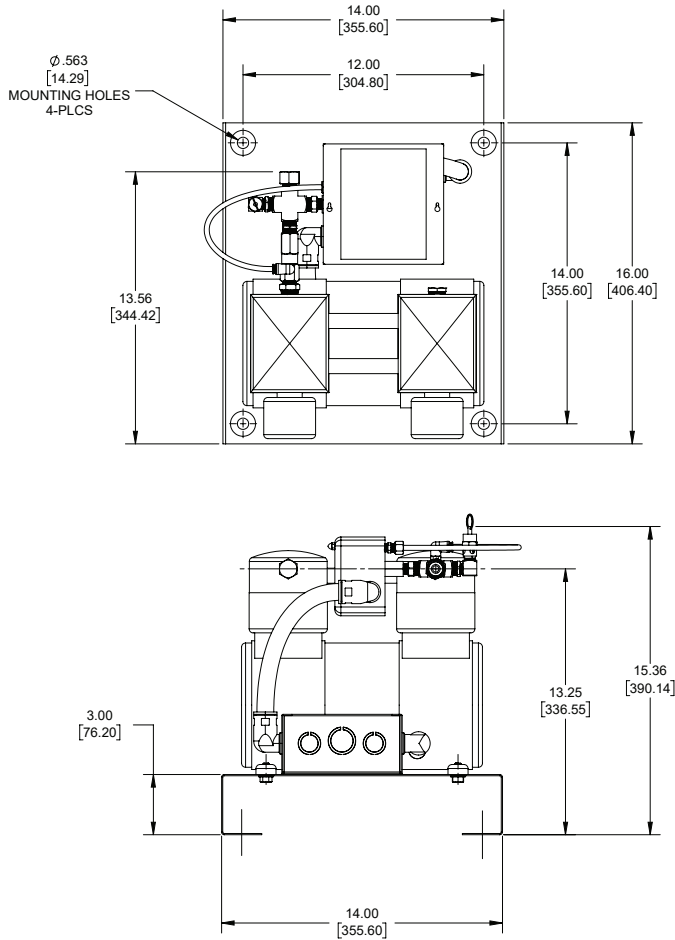
Wiring

Fig 2



Dimensions

Fig 3



XX = INCH
[XX.XX] = MILLIMETERS
ALL DIMENSIONS FOR REFERENCE ONLY

Ordering Information

Part Number	Model	Description
1119661	INS-QFC	Quick Fill Compressor